

MICROH

PROFESSIONAL PRODUCTS

www.microhpro.com



USER MANUAL

LED CHAMELEON V2

Keep this manual for future reference.

TABLE OF CONTENTS

1. INTRODUCTION AND UNPACKING	1
2. SAFETY INSTRUCTIONS	1-2
3. OPERATION INSTRUCTIONS	2-3
4. MOUNTING AND INSTALLATION	4
5. DMX-512 CONTROL CONNECTIONS	5
6. MENU NAVIGATION	6-7
7 DMX CHANNELS	8
8. KEY FEATURES	9
9. TECHNICAL SPECIFICATIONS	9
10. MAINTENANCE AND CLEANING	10

1. INTRODUCTION AND UNPACKING

Thank you for purchasing the MICROH LED CHAMELEON V2 wash fixture. For your own safety and knowledge, please read this manual before installing or operating the device. This manual covers the important information on installation and applications. Please install and operate the fixture according to instructions. Meanwhile, please keep this manual for future reference.

The MICROH LED CHAMELEON V2 wash fixture is made of a new type of high temperature cast aluminum casing. The fixture is designed and manufactured strictly following CE standards, complying with international standard DMX512 protocol. This fixture is applicable but not limited to large-scale live performances, theater, studio, nightclubs and discos.

The MICROH LED CHAMELEON V2 wash fixture uses 36 powerful 1W LED's (12 Red, 12 Green, 12 Blue) which feature high brightness and stability. Please carefully unpack it when you receive the fixture and check if it was damaged during the transportation. And please check whether the following items are included inside the box:

Fixture – One User Manual - One

2. SAFETY INSTRUCTIONS



This device has left the factory in perfect condition. In order to maintain this condition and to ensure safe operation, it is absolutely necessary for the user to follow the safety instructions and warning notes written in this user manual.



Important:

Damages caused by the disregard of this user manual are not subject to warranty. The dealer will not accept liability for any resulting defects or problems.

If the device has been exposed to temperature changes, do not switch it on immediately. The arising condensation could damage the device. Leave the device switched off until it has reached room temperature, and is dry.




This device falls under protection-class I, therefore it is essential that the device be grounded. The electrical connection must be carried out by a qualified technician.

The device should only be used with rated voltage and frequency. Make sure that the available voltage is not higher than 120V as stated at the end of this manual.

Make sure the power cord is never crimped or damaged in any way, as this could cause shock and damage. If your power cord is damaged in any way, please purchase a new cable from your local MICROH dealer. Always disconnect power, when the device is not in use or before cleaning it. Never pull out the plug by tugging the power cord.

During initial start-up, some smoke or smell may arise. This is a normal process, and does not necessarily mean that the device is defective. It should decrease gradually. Please do not project the beam onto combustible substances.

Fixtures cannot be installed on or near combustible substances. Keep more than 50cm distance from wall for proper ventilation and air flow. If your fixture is or has become damaged in any way, it shall be exclusively replaced or repaired by the manufacturer to avoid any hazard.

	CAUTION! Never touch the device during operation! The housing may heat up
	CAUTION! Never look directly into the light source, as sensitive persons may suffer an epileptic shock.
	CAUTION! The electric connection must only be carried out by a qualified electrician.

3. OPERATION INSTRUCTIONS

- Do not turn on the fixture if it has been through severe temperature differences. Damage may occur to the fixture. Wait until unit is at room temperature to operate.
- The unit should be protected from any vibration or agitation during transport.
- Do not expose the fixture in any excessive heat when installing. Do not lay any power cables on the floor. It may cause electronic shock or damage to persons or equipment.
- Make sure to attach the safety chain/cable when installing the fixture.
- Make sure the fixture is operated and installed by qualified personnel.
- Keep the original packaging in case of defective product.
- Any non-manufacturer additions, modifications or changes in any way will void the warranty.
- Please do not attempt to open unit. It is only to be serviced by an authorized technician. If this occurs, or is apparent, the warranty will be voided.
- The fixture's warranty will be voided if there are any malfunctions from not following the user manual or any illegal operation (shock short circuit, electronic shock, lamp broke, etc.)
- This unit has a total of 6 operating modes: **Master/Slave, DMX, Manual, Strobe, Colour Fade & Colour Change**

MASTER/SLAVE MODE

- By connecting the 3 pin DMX, you can daisy chain up to 30 units on master / slave mode. Daisy chain the fixtures together by plugging from the DMX output of the first fixture into the DMX input of the second fixture, and so on...
- On the master fixture, set to one of these modes: colour fade, colour change, strobe or manual mode.
- On the slave fixtures set the unit to DMX mode.

DMX MODE

- Press and release the A button until "001" is displayed. Press the B button to edit. Use the A & B buttons to select desired address. Example: Current address is 001 and it is desire to change to address 125. Press the A button to find 0.01 to select B and press the B button to change to 1. Press the A button to change the next digit 10.1 press the B button press 3 times to change to 2. Press the A button to select the last digit and press the B button 5 times to change to 5.

Led Chameleon V2 has 3, 4 or 6 channel modes. To change channel modes press the A button until 'cHn' is displayed. Press the B button until desire channel is displayed.

COLOUR FADE MODE

- Press and release the A button until 'FAd' is displayed. Press the B button to select desired speed from 0 to 9 (9 is maximum).

COLOUR CHANGE MODE

- Press and release the A button until 'Ac' is displayed. Press the B button to select desired speed from 0 to 9 (9 is maximum).

STROBE MODE

- Press and release the A button until 'FLA' is displayed. Press the B button to select desire speed from 0 to 9 (9 is maximum).

MANUAL MODE

- In this mode, Chameleon V2 can change the brightness intensity of Red, Green and Blue colours.

- To change red colour press and release the A button until "rL-" is displayed. Press the B button to edit brightness from 0 to 9 (9 is maximum).

To change green colour press and release the A button until "gL-" is displayed. Press the B button to edit brightness from 0 to 9 (9 is maximum).

To change Blue colour press and release the A button until "bL-" is displayed. Press the B button to edit brightness from 0 to 9 (9 is maximum).

4. MOUNTING AND INSTALLATION

Caution: For added protection, mount the fixtures in areas outside walking paths, seating areas, or in areas where the fixture might be reached by unauthorized personnel. Before mounting the fixture to any surface, make sure that the installation area can hold a minimum point load of 10 times the device's weight. Fixture installation must always be secured with a secondary safety attachment, such as an appropriate safety cable. Never stand directly below the device when mounting, removing, or servicing the fixture.

Whether installing inverted on a truss or ceiling, or set on a flat level surface. Be sure this fixture is kept at least 0.5m (1.5 ft) away from any flammable materials (decoration etc.). Always use and install a safety cable as a safety measure to prevent accidental damage and/or injury in the event the clamp fails.

Mounting Points: Overhead mounting requires extensive experience, including calculating working load limits. A knowledge of the installation material being used and periodic safety inspection of all installation material and the fixture are all imperative and should only be performed by a qualified technician. Improper installation can result in bodily injury and damage.

Be sure to complete all rigging and installation procedures before connecting the main power cord to the appropriate wall outlet.

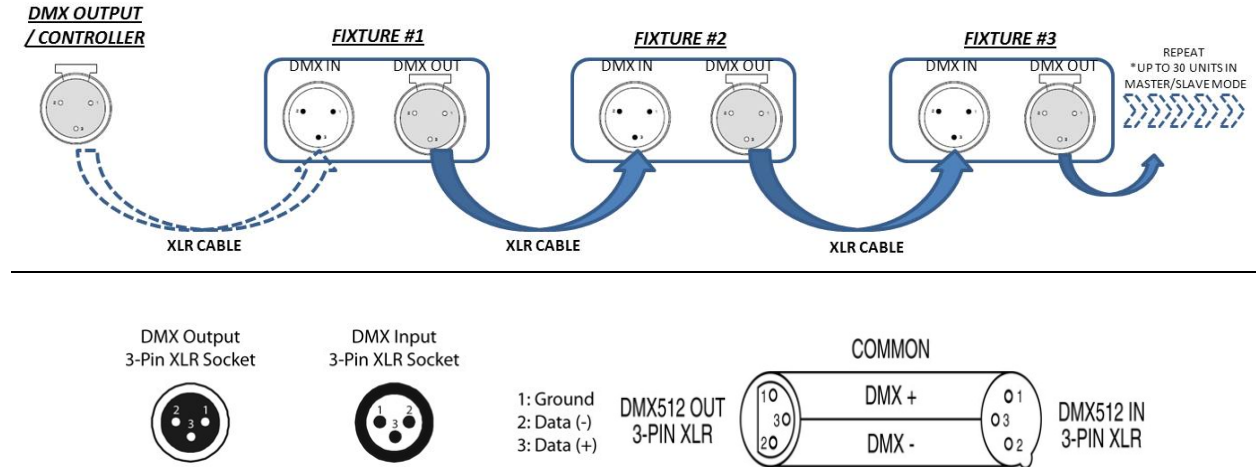
Clamp Mounting: The MICROH LED CHAMELEON V2 provides a unique mounting bracket assembly to mount on a truss or the floor. When mounting this fixture to truss, be sure to secure an appropriately rated clamp. Be sure to attach the clamp to the bracket through the center hole. As an added safety measure, be sure to attach at least one properly rated safety cable to the fixture.



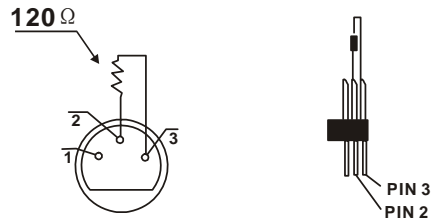
Regardless of the rigging option you choose for your MICROH LED CHAMELEON V2 wash fixture, always be sure to secure your fixture with a safety cable. The fixture provides a built-in rigging point for a safety cable on the hanging bracket as illustrated above. Be sure to only use the designated rigging point for the safety cable and never secure a safety cable to a carrying handle.

5. DMX-512 CONTROL CONNECTIONS

This fixture complies with international USITT DMX standards and can be used with either a 3 pin DMX connector or a 5 pin DMX connector. Plug in the provided 3 pin XLR cable to the female 3 pin XLR output of your controller and the other side to the male 3 pin XLR input of the LED CHAMELEON V2. To connect the units to DMX, you must daisy chain the fixtures together as referred in the diagram below. Always end your DMX-512 connection with a DMX terminator.



For installations where the DMX cable has to run a long distance, or is in an electrically noisy environment, it is recommended to use a DMX terminator. This helps in preventing corruption of the digital control signal by electrical noise. The DMX terminator is simply an XLR plug with a 120 Ω resistor connected between pins 2 and 3, which is then plugged into the output XLR socket of the last fixture in the chain. Please see illustrations below.



6. MENU NAVIGATION

To enter the menu, press the “A” button one time. Use buttons “A” & “B” to move within the menu. Use button “B” to select the function, and to recall the next menu section. To escape; press the “A” button.

FUNCTION

Manual mode

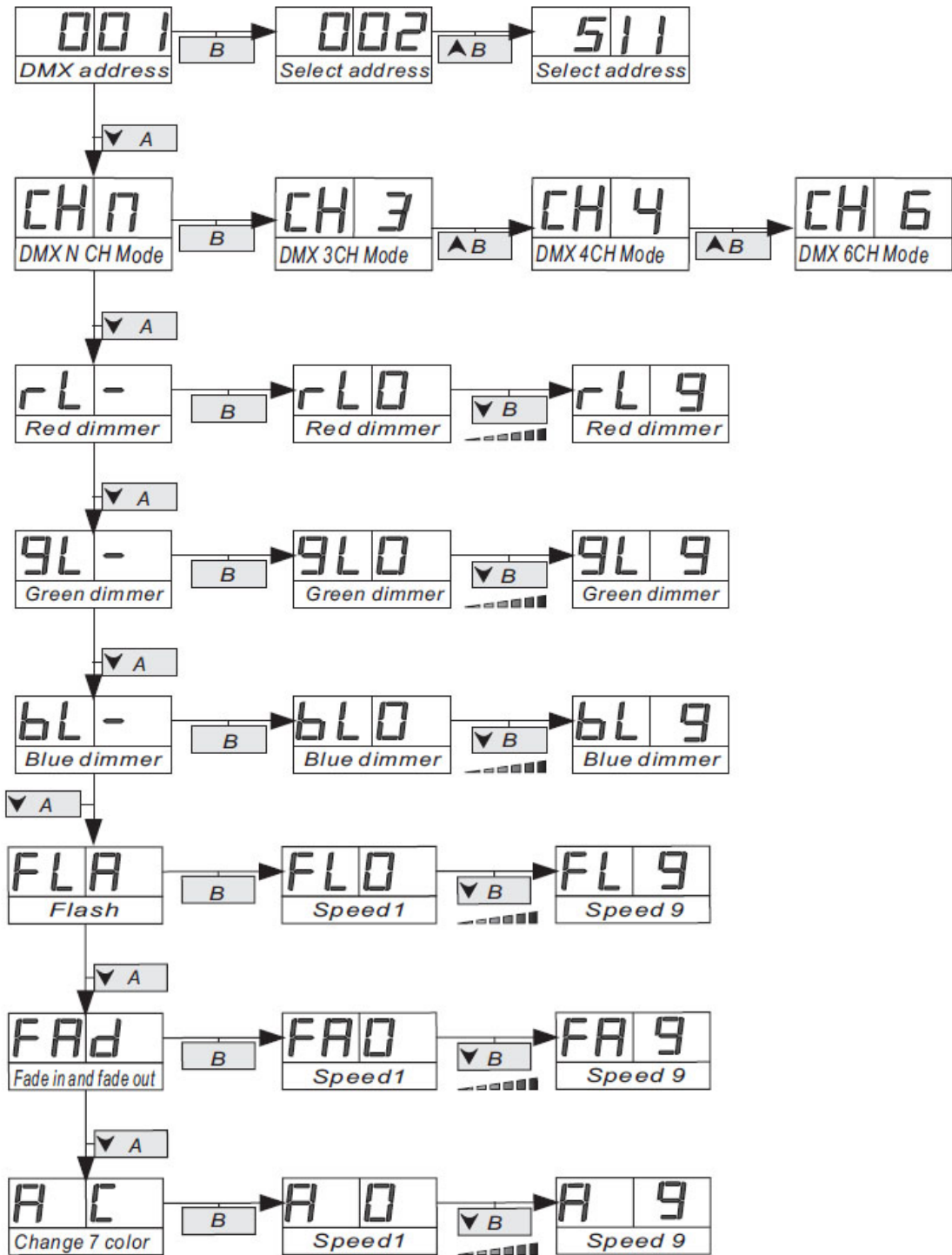
1	RL9	Red dimmer
2	GL9	Green dimmer
3	BL9	Blue dimmer

Auto mode

1	FL9	Flash
2	FA9	Automatic fade in and fade out
3	AC9	Auto change 7 color

Synchronization mode(master and slave)

1	Master light	Choose same as (manual ,auto, sound control) mode way
2	All slave lights	001



7. DMX CHANNELS

Mode 1 – 3 Channel's:

Channel 1: 0-255 RED 0% - 100%
Channel 2: 0-255 GREEN 0% - 100%
Channel 3: 0-255 BLUE 0% - 100%

Mode 2 – 4 Channel's:

Channel 1: 0-255 DIMMER 0% - 100%
Channel 2: 0-255 RED 0% - 100%
Channel 3: 0-255 GREEN 0% - 100%
Channel 4: 0-255 BLUE 0% - 100%

Mode 3 – 6 Channel's:

Channel 1: 0-255 DIMMER 0% - 100%
Channel 2: 0-255 RED 0% - 100%
Channel 3: 0-255 GREEN 0% - 100%
Channel 4: 0-255 BLUE 0% - 100%
Channel 5: STROBE
 000-009 No Function
 010-057 Strobe - Slow to Fast
 058-059 No Function
 060-108 Strobe - Slow to Fast
 109-110 No Function
 111-159 Strobe Fast
 160-161 No Function
 162-255 Random Strobe
Channel 6: MACROS
 000-009 No Macro
 010-050 Colour Fade
 051-091 Colour Fade RGB Only
 092-132 Colour Fade
 133-173 Colour Snap
 174-214 Colour Pulse
 215-255 Random all Macros

8. KEY FEATURES

- 36 x 1W LEDs (12 Red, 12 Green, 12 Blue)
- 6 Operation Modes
- 3 Pin XLR Input & Output
- DMX Control with 3 DMX Modes (3, 4 or 6 Channel)
- Bracket for Truss and Floor Mounting
- 2-Button LED Digital Display (A, B)
- IP65 Rated for Outdoor Use
- Flicker Free

9. TECHNICAL SPECIFICATIONS

MODEL: LED CHAMELEON V2

LAMP: 36 x 1W Tri LEDs

OPERATING TEMPERATURE: -25°C to 45°C

VOLTAGE: 120VAC 60Hz 60W

FUSE: 1A / 250V

IP RATING: IP65

DIMENSIONS: 12.6" x 5.7" x 8.9" / 320 x 145 x 226 mm

PACKING DIMENSIONS: 15.55" x 9.65" x 7.68" / 395 x 245 x 195 mm

NET WEIGHT: 8.65 lbs. / 3.92 kg

GROSS WEIGHT: 9.75 lbs. / 4.42 kg

WARRANTY: 2 Year Limited Warranty

10. MAINTENANCE AND CLEANING

The following points have to be considered during the inspection:

- 1) All screws for installing the device or parts of the device must be tightly connected, and must not be corroded.
- 2) There must not be any deformations to the housing or installation spots (ceiling, suspension, trussing).
- 3) Mechanically moved parts must not show any traces of wearing and must not rotate with unbalances.
- 4) The electric power supply cables must not show any damage or material fatigue.

Further instructions depending on the installation spot and usage must be handled by a skilled installer or technician. Any safety issues must be resolved.



In order to keep the fixture in good condition and extend the life, we suggest regular cleaning to the fixture.

- 1) Clean the fan each week.
- 2) A detailed electrical check by approved technician every three months is advised. Ensure the circuit contacts are in good condition, and prevent from overheating.

We recommend a thorough cleaning of the device by an approved service technician.

There are no serviceable parts inside the device.

Should you need any spare parts, please order genuine MICROH parts from your local dealer.

IF YOU SHOULD EXPERIENCE ANY PROBLEMS OR ISSUES PLEASE CONTACT MICROH PROFESSIONAL PRODUCTS BY EMAIL AT info@microhpro.com

In the event that your unit is defective in any way, please contact your local dealer to obtain an RA number for service repair.

DISCLAIMER – MICROH believes that the information contained within this user manual is accurate. However, Microh is not responsible for any error or addendums to this manual. If you have any comments or general suggestions on how this manual can be improved please contact info@microhpro.com. Thank you.

MICROH
PROFESSIONAL PRODUCTS
www.microhpro.com